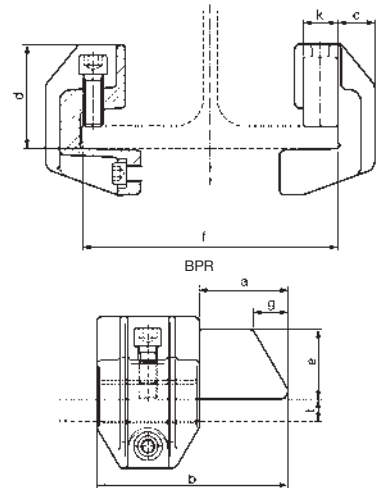


ABUS clamping buffers



Selection table for shaped clamping buffers

Type Size	Dimensions, mm							Weight kg
				Rubber				
	b	c	d	a	e	g	k	
alpha	110	20	63	45	40	15	26	2.6
beta	170	32	90	80	60	35	30	5.9

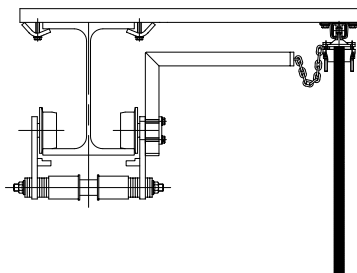


Type designations	Beam		For use with ABUS electric chain hoists	Ref.
	Flange width range mm	Flange thickness mm		
alpha	64 – 120	5.7 - 20.5	≤ 2.5 to	37329
	121 – 190			37434
	191 – 243			37435
	244 – 300			37443
beta	110 – 160	11.5 - 30	≤ 4 to	37444
	161 – 230			37445
	231 – 283			37446
	284 – 340			37447
	341 – 405			37448

Can be used with S 235 parallel flanged beams (free from oil and grease) and for trolleys with a max. travel speed of 36 m/min.

Note: For buffering a trolley on both sides, 2 clamping buffers are required.

ABUS trolley current collectors



	Weight	Order N°
For the festoon power supply system	3.7 kg	309728
For the power conductor type KBH	2.4 kg	309729